

TWENTY

EDIMAX
— CERAMICHE
ASTOR



Vivere a colori

Living in color

- 02 Colors
- 10 Blues
- 18 Freedom
- 26 Night&Day
- 34 Stardust
- 42 Moonlight





Twenty
Colors

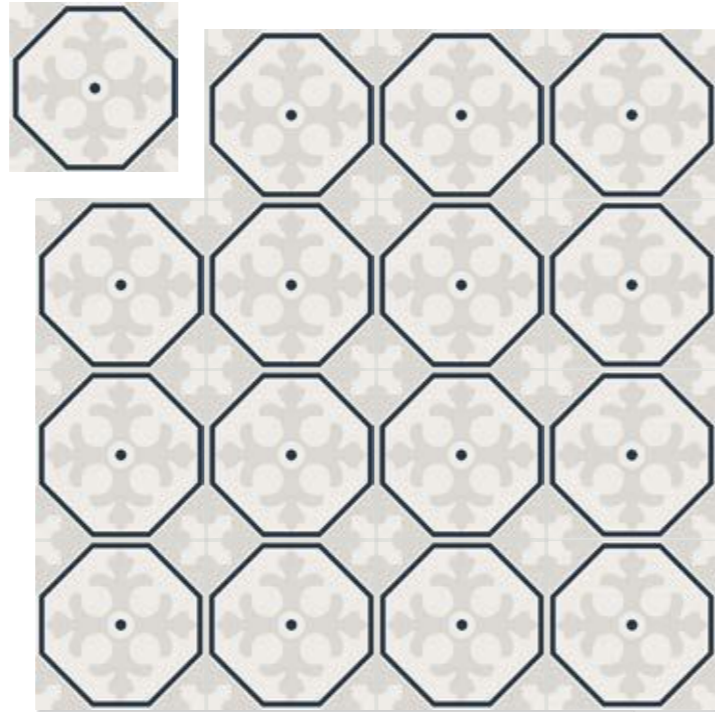


Una perfetta sintonia tra spazio, materia e colore

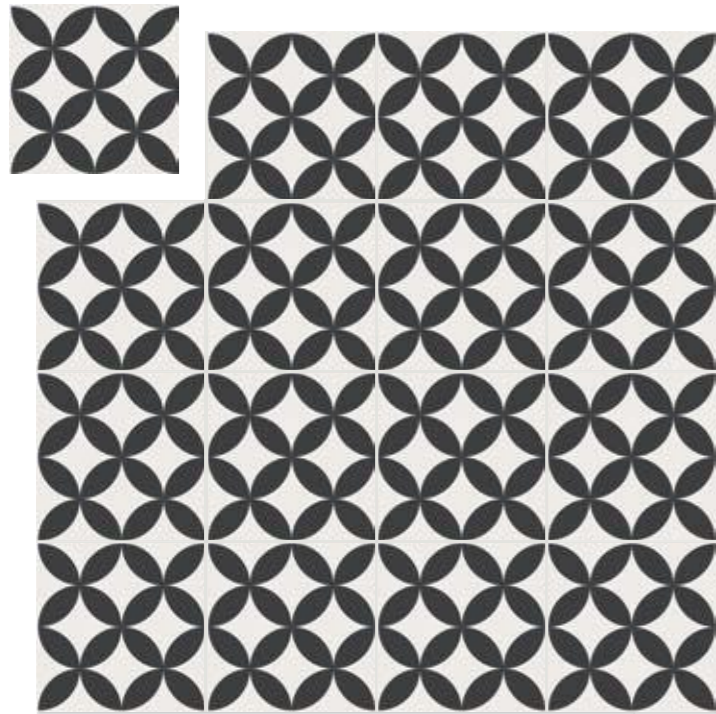
*A perfect harmony
between space, matter
and color*



COLORS DECORO A 20X20 (8"X8") RET
B157



COLORS DECORO B 20X20 (8"X8") RET
B158

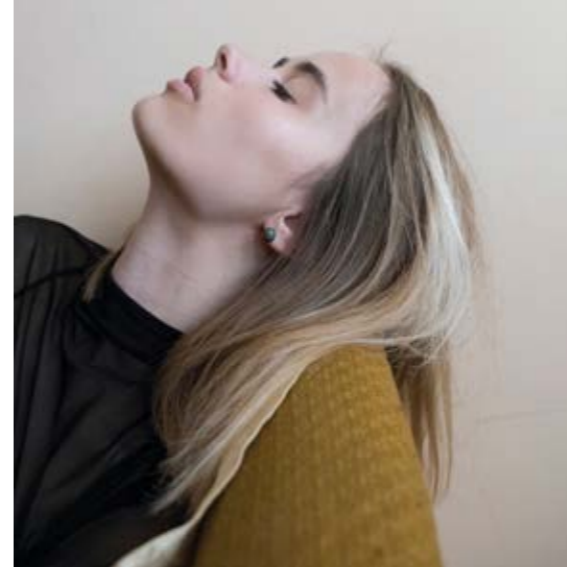


COLORS DECORO C 20X20 (8"X8") RET
B179



COLORS DECORO D 20X20 (8"X8") RET
B180

vivace
moderno
divertente

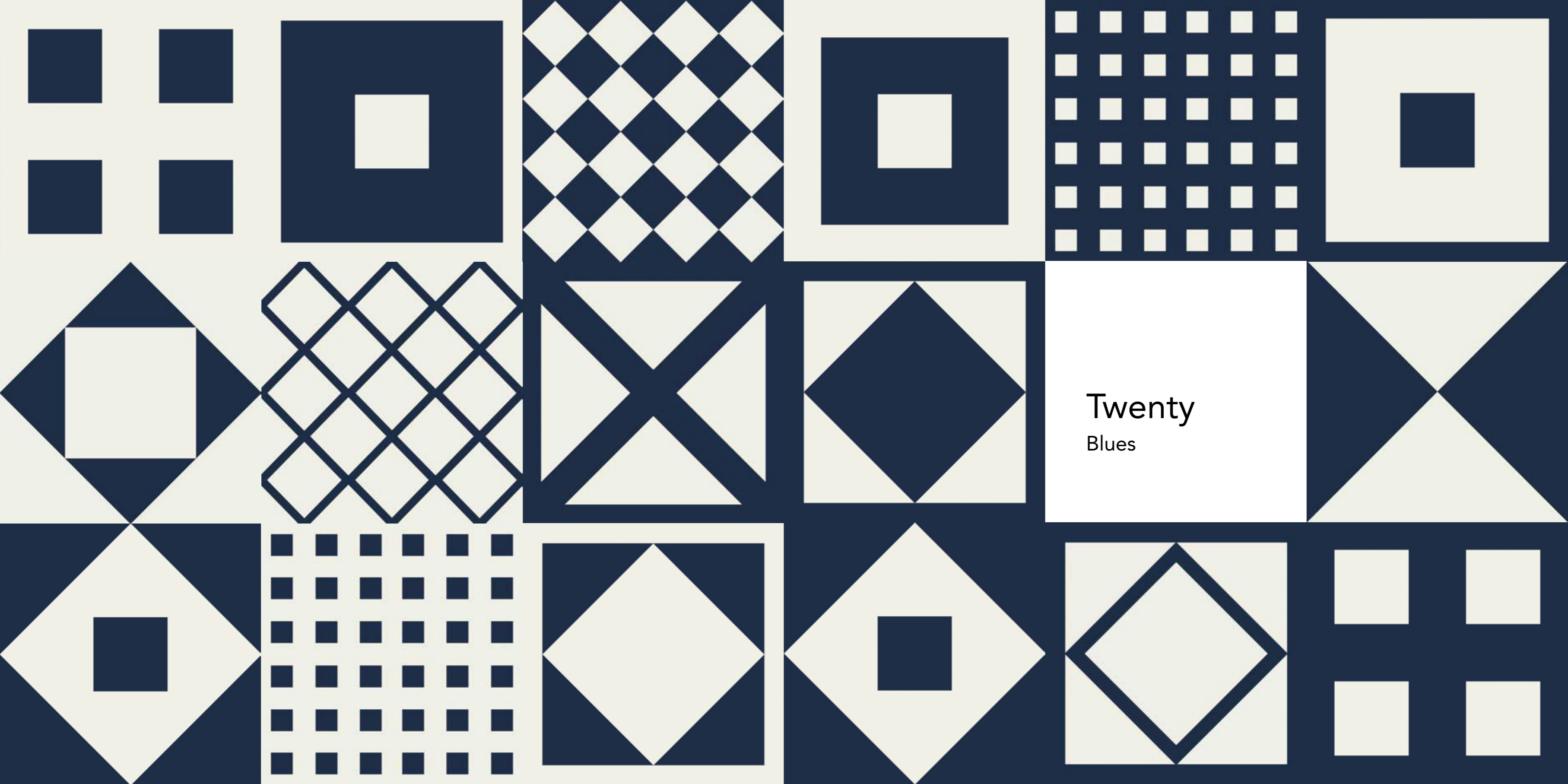


*lively
modern
funny*

Una collezione dal forte impatto visivo che con le sue molteplici combinazioni cromatiche permette di arredare spazi privati e commerciali in modo brioso e fresco.

A collection with a strong visual impact that with its multiple color combinations allows to furnish private and commercial spaces in a lively and fresh way.



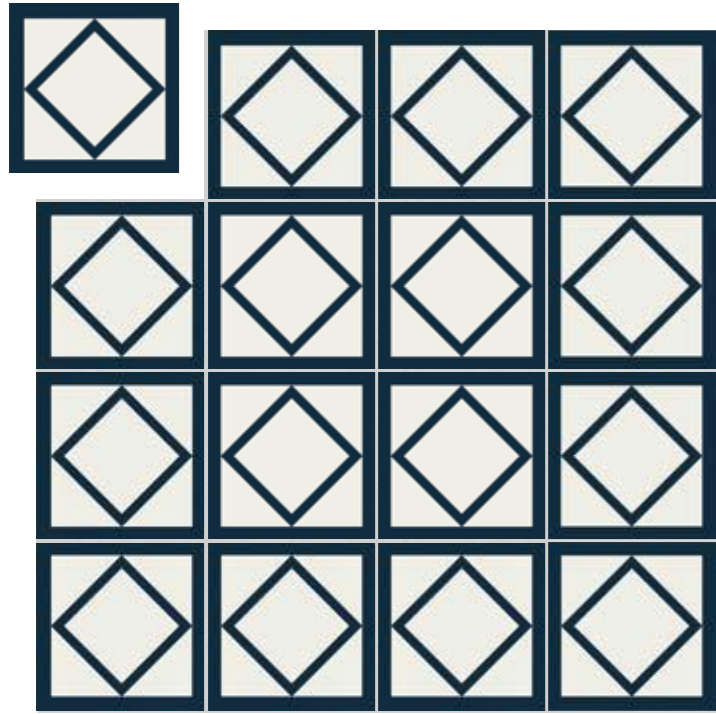


Twenty
Blues

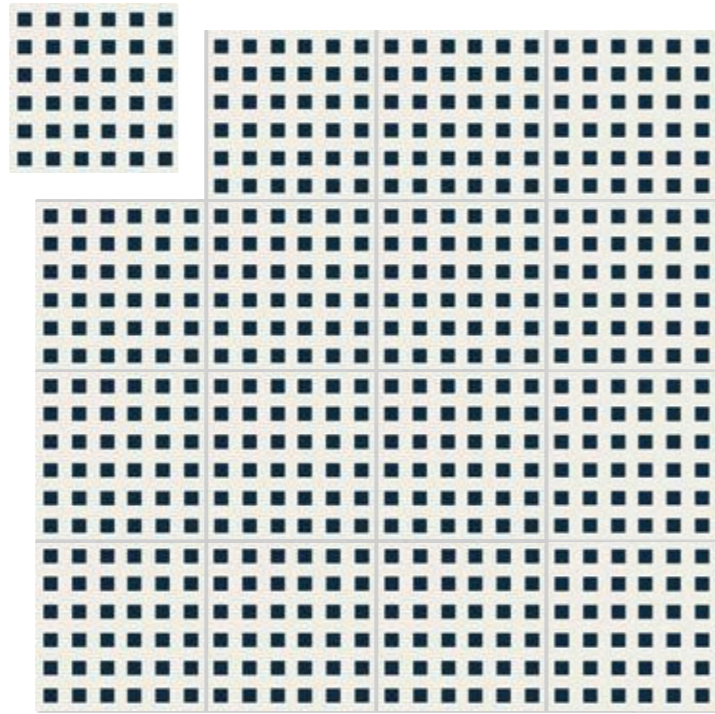


Contrasti essenziali per un mix attuale e ricercato

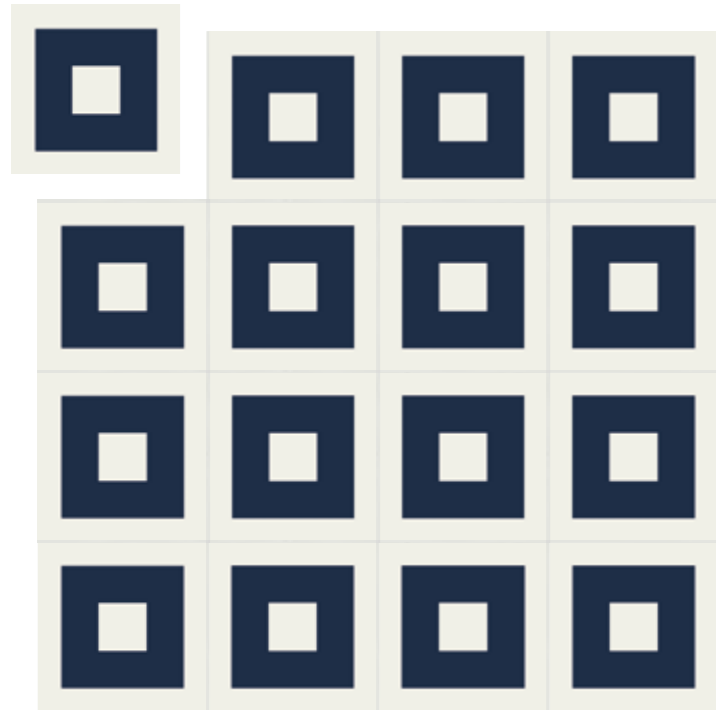
*Essential contrasts for a
current and refined mix*



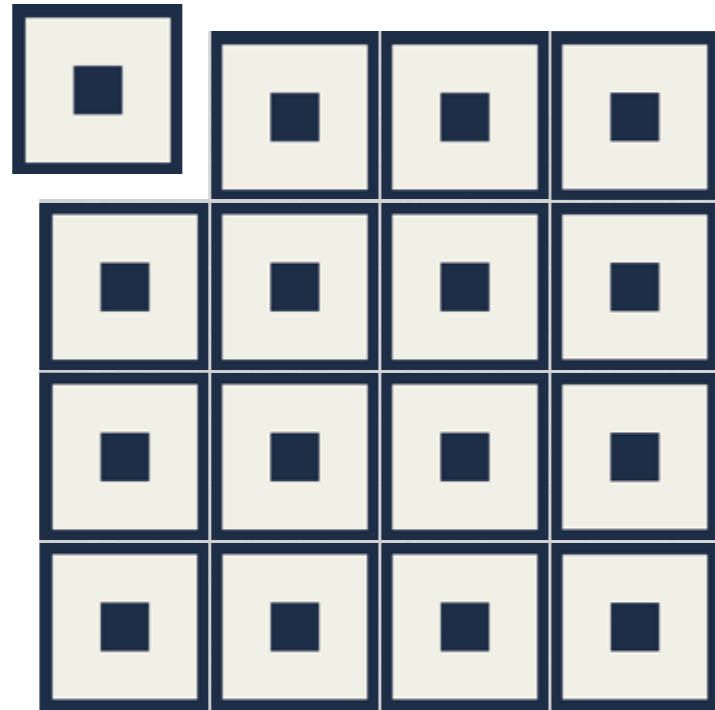
BLUES DECORO A 20X20 (8"X8") RET
B175



BLUES DECORO B 20X20 (8"X8") RET
B176



BLUES DECORO C 20X20 (8"X8") RET
B177



BLUES DECORO D 20X20 (8"X8") RET
B178

dinamico
contrastato
pieno



*dynamic
thwarted
full*

Un tuffo nel colore puro, pieno. La bicromia, protagonista assoluta dello spazio, si esprime con forme decise e geometriche: quadrati, rombi, griglie e giochi di contrasti arredano gli ambienti in modo dinamico e deciso.

A dip in pure, full color. The two-colors, absolute protagonists of the space, are expressed with decisive and geometric shapes: squares, rhombuses, grids and contrast games furnish the rooms in a dynamic and decisive way.



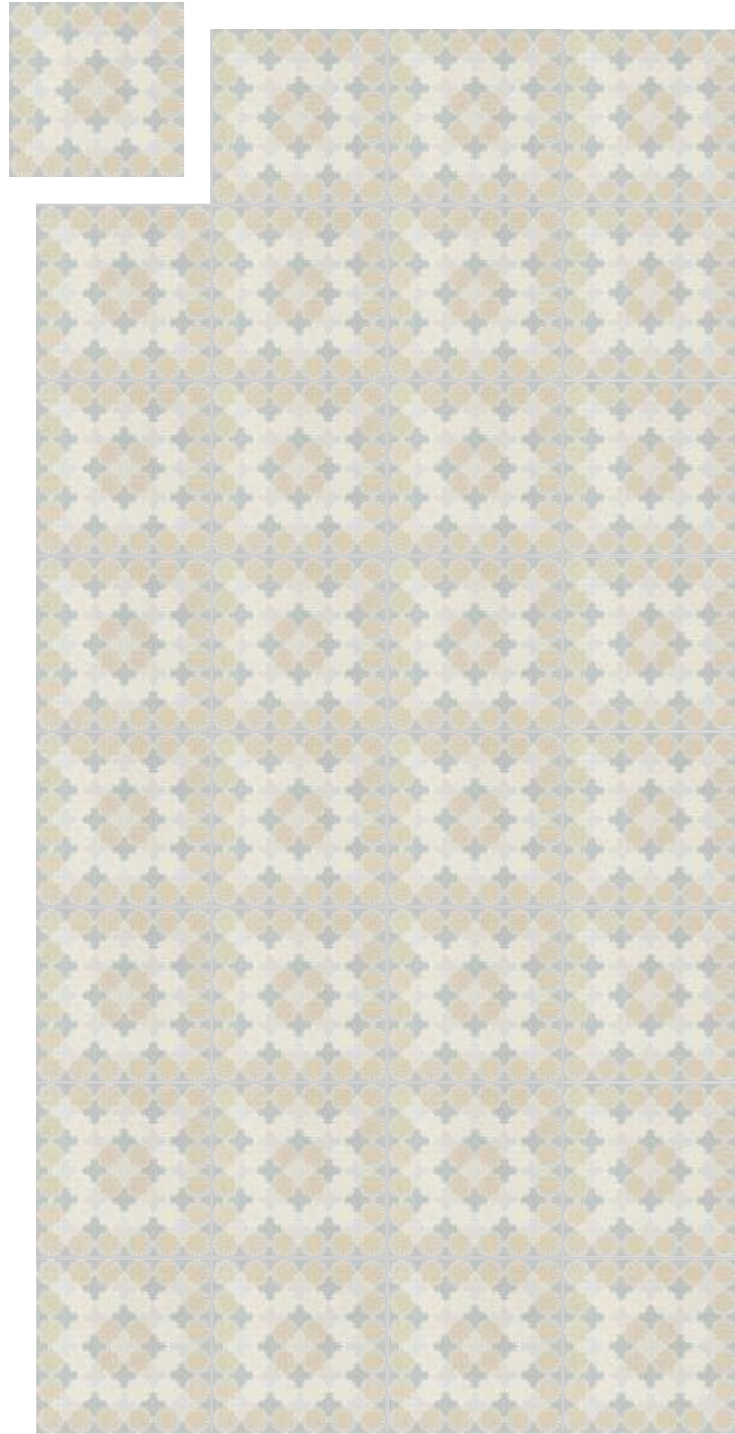


Twenty
Freedom

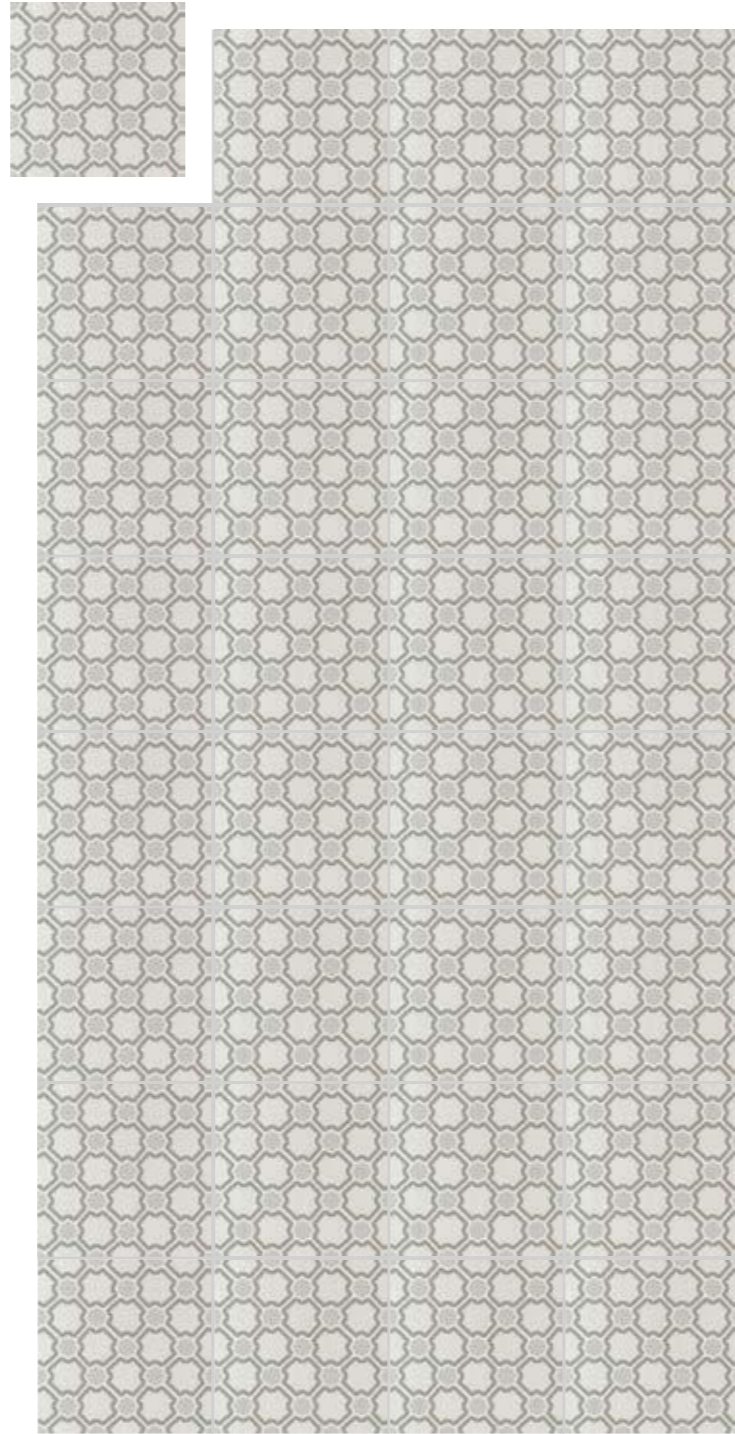


Forme morbide e preziose che arredano con design in modo seducente

*Soft and precious shapes that
furnish with design in
a seductive way*



FREEDOM DECORO A 20X20 (8"X8") RET
B172



FREEDOM DECORO B 20X20 (8"X8") RET
B173

fresco
accattivante
ricco



*fresh
captivating
rich*

Pattern molto decorativi riempiono gli ambienti di fascino ed eleganza, texture variegata giocano con colori pastellati e rilassanti offrendo allo sguardo variazioni tonali e grafismi raffinati.

Very decorative patterns fill the rooms with charm and elegance, varied textures play with pastel and relaxing colors, offering to the eye tonal variations and refined graphics.





Twenty
Night&Day



Un segno classico modulato in chiaro scuro per una lettura moderna e contemporanea

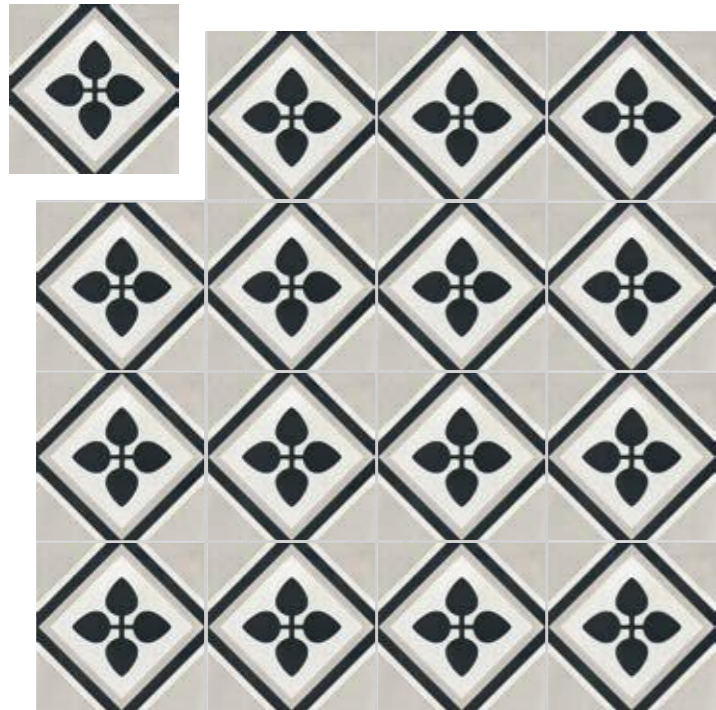
*A classic sign expressed in light
and shade for a modern and
contemporary action*



NIGHT & DAY DECORO A 20X20 (8\"/>



NIGHT & DAY DECORO B 20X20 (8\"/>



NIGHT & DAY DECORO C 20X20 (8\"/>



NIGHT & DAY DECORO D 20X20 (8\"/>

glamour
attuale
romantico



*glamorous
current
romantic*

Una superficie che porta con sé il fascino del tempo. Suggestioni retrò di raffinata interpretazione in perfetta sintonia con le tonalità di un design ricercato e sempre attuale.

A surface that brings with it the charm of time. Retro suggestions of refined interpretation in perfect harmony with the shades of a refined and always up-to-dated design.



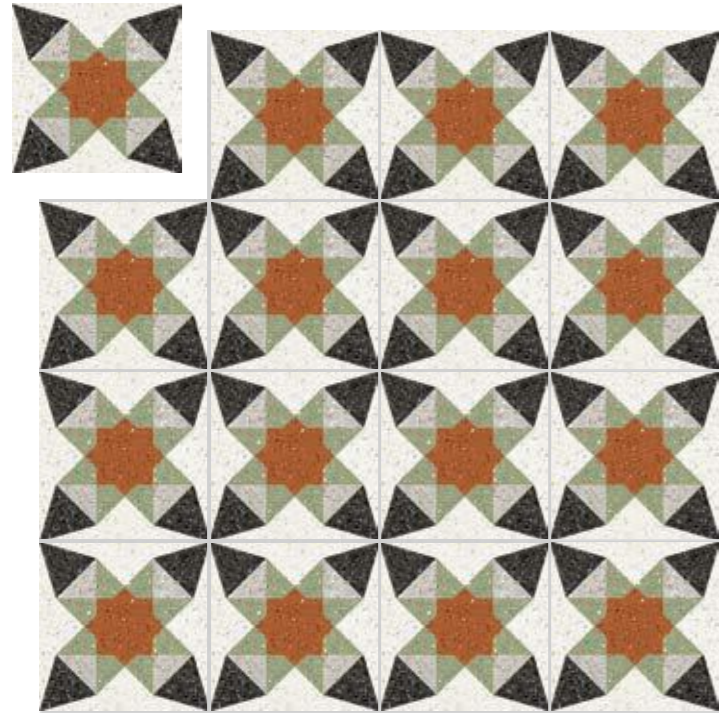


Twenty
Stardust

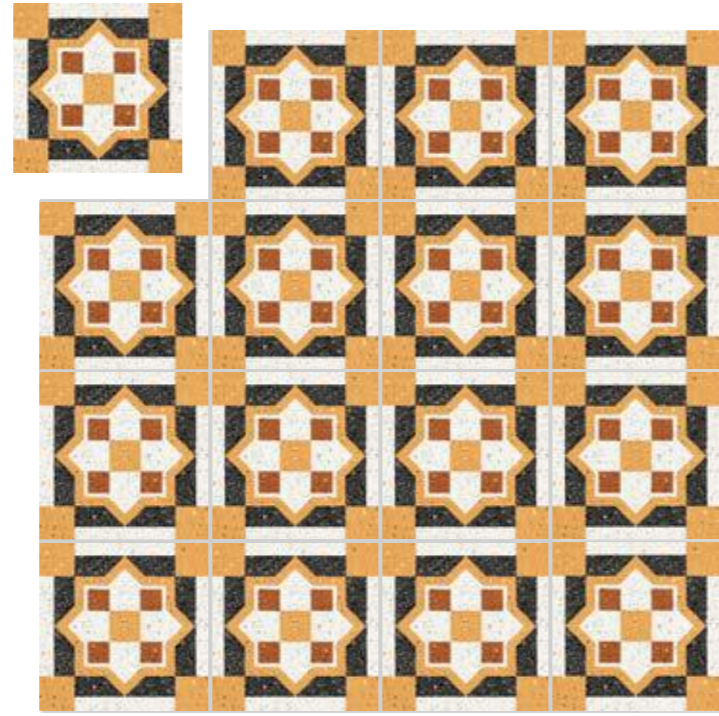


Toni e accostamenti ricercati per atmosfera eleganti e senza tempo

*Tones and sophisticated
combinations for elegant
and timeless atmospheres*



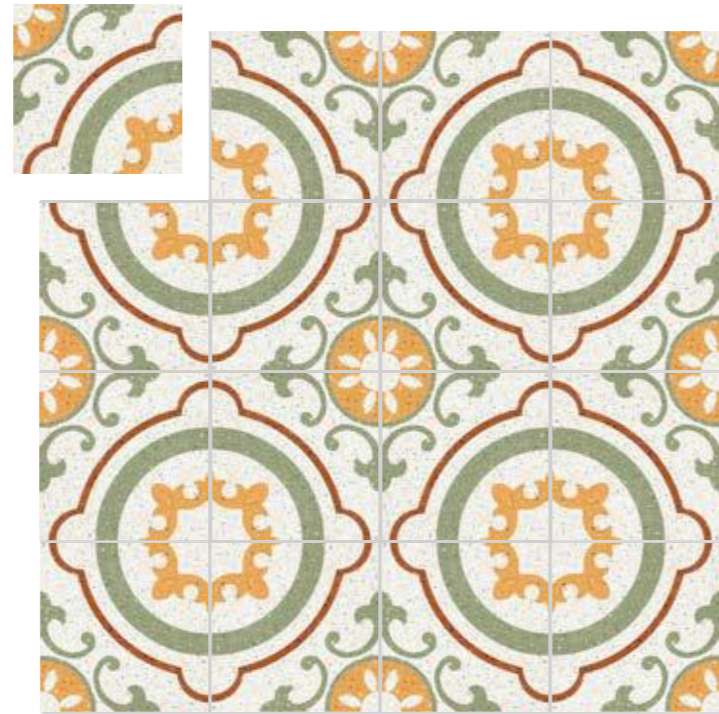
STARDUST DECORO A 20X20 (8"X8") RET



STARDUST DECORO B 20X20 (8"X8") RET



STARDUST DECORO C 20X20 (8"X8") RET



STARDUST DECORO D 20X20 (8"X8") RET

inusuale
seducente
caldo



*unusual
seductive
warm*

Quando la materia esprime fascino ed ogni colore cattura l'attenzione. Un tappeto grafico dal mood eclettico, pervaso di cromatismi e gusto per il bello.

When the matter expresses charm and each color captures the attention. A graphic carpet with an eclectic mood, full of colors and taste for beauty.



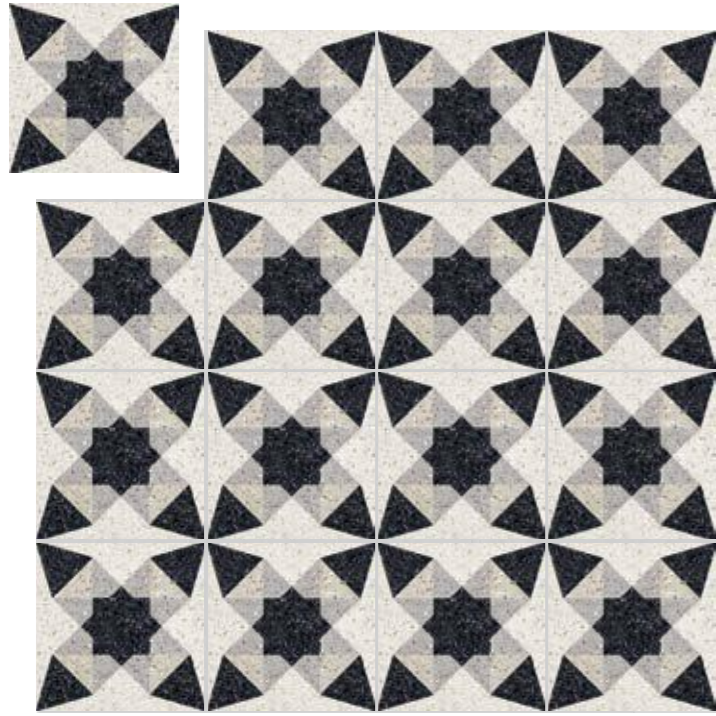


Twenty
Moonlight

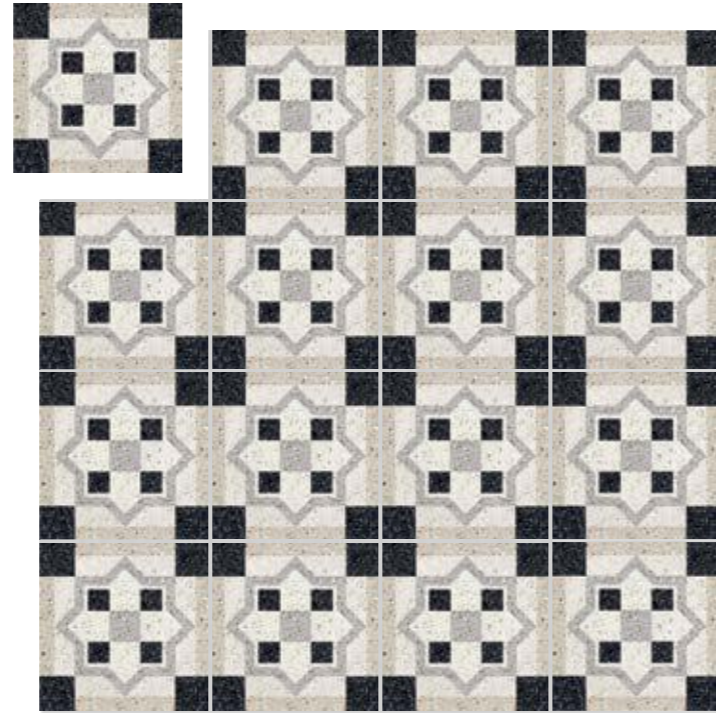


Un linguaggio fatto di toni chiari e scuri per ambienti dall'architettura raffinata

A language made of light and dark tones for environments with refined architecture



MOONLIGHT DECORO A 20X20 (8\"X8\") RET



MOONLIGHT DECORO B 20X20 (8\"X8\") RET



MOONLIGHT DECORO C 20X20 (8\"X8\") RET



MOONLIGHT DECORO D 20X20 (8\"X8\") RET

rivisitato
architettonico
nobile



*revisited
architectural
noble*

Da un pavimento in graniglia i disegni affiorano lasciando spazio a diverse combinazioni geometriche che regalano un'estetica moderna, dallo stile colto e raffinato.

From a grit floor, the designs surface leaving room for different geometric combinations that give a modern aesthetic, with a refined and cultivated style.



Colors



COLORS MIX 20X20 (8"X8") RET
B156



COLORS DECORO A
20X20 (8"X8") RET
B157

COLORS DECORO B
20X20 (8"X8") RET
B158

COLORS DECORO C
20X20 (8"X8") RET
B179

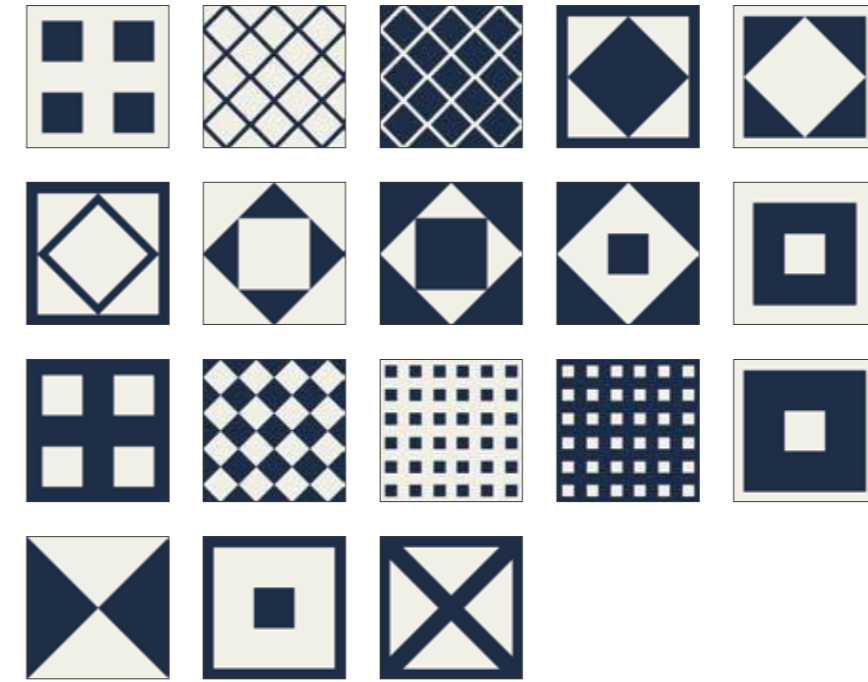
COLORS DECORO D
20X20 (8"X8") RET
B180

PAVIMENTI



20X20 (8"X8")RET
B148 PLAIN WHITE

Blues



BLUES MIX 20X20 (8"X8") RET
B152



BLUES DECORO A
20X20 (8"X8") RET
B175

BLUES DECORO B
20X20 (8"X8") RET
B176

BLUES DECORO C
20X20 (8"X8") RET
B177

BLUES DECORO D
20X20 (8"X8") RET
B178

PAVIMENTI



20X20 (8"X8")RET
B148 PLAIN WHITE



20X20 (8"X8")RET
B150 PLAIN BLUE

Freedom



FREEDOM MIX 20X20 (8"X8") RET
B171



FREEDOM DECORO A
20X20 (8"X8") RET
B172



FREEDOM DECORO B
20X20 (8"X8") RET
B173

PAVIMENTI



20X20 (8"X8")RET
B151 CLAY WHITE

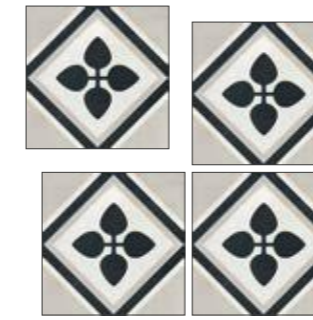
Night&Day



NIGHT & DAY DECORO A
20X20 (8"X8") RET



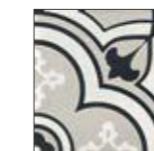
NIGHT & DAY DECORO B
20X20 (8"X8") RET



NIGHT & DAY DECORO C
20X20 (8"X8") RET



NIGHT & DAY DECORO D
20X20 (8"X8") RET



NIGHT & DAY DECORO
A 20X20 (8"X8") RET
B154



NIGHT & DAY DECORO C
20X20 (8"X8") RET
B185



NIGHT & DAY DECORO B
20X20 (8"X8") RET
B155



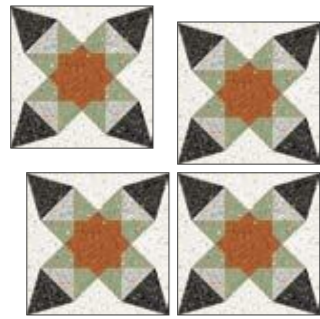
NIGHT & DAY DECORO D
20X20 (8"X8") RET
B186

PAVIMENTI

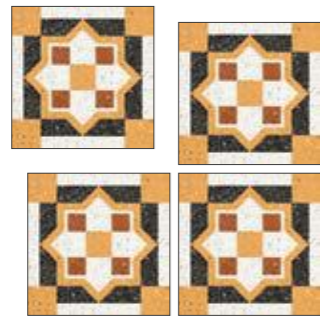


20X20 (8"X8")RET
B151 CLAY WHITE

Stardust



STARDUST DECORO A
20X20 (8"X8") RET



STARDUST DECORO B
20X20 (8"X8") RET



STARDUST DECORO C
20X20 (8"X8") RET



STARDUST DECORO D
20X20 (8"X8") RET



STARDUST DECORO A
20X20 (8"X8") RET
B211



STARDUST DECORO B
20X20 (8"X8") RET
B212



STARDUST DECORO C
20X20 (8"X8") RET
B213



STARDUST DECORO D
20X20 (8"X8") RET
B214

PAVIMENTI



20X20 (8"X8") RET
B216 FLAKES WHITE



20X20 (8"X8") RET
B217 FLAKES IVORY



20X20 (8"X8") RET
B218 FLAKES GREY



20X20 (8"X8") RET
B215 FLAKES BLACK

Moonlight



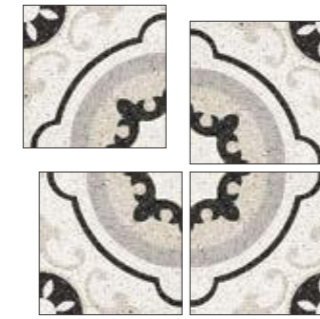
MOONLIGHT DECORO A
20X20 (8"X8") RET



MOONLIGHT DECORO C
20X20 (8"X8") RET



MOONLIGHT DECORO B
20X20 (8"X8") RET



MOONLIGHT DECORO D
20X20 (8"X8") RET



MOONLIGHT DECORO A
20X20 (8"X8") RET
B207



MOONLIGHT DECORO B
20X20 (8"X8") RET
B208



MOONLIGHT DECORO C
20X20 (8"X8") RET
B209



MOONLIGHT DECORO D
20X20 (8"X8") RET
B210

PAVIMENTI



20X20 (8"X8") RET
B216 FLAKES WHITE



20X20 (8"X8") RET
B217 FLAKES IVORY



20X20 (8"X8") RET
B218 FLAKES GREY



20X20 (8"X8") RET
B215 FLAKES BLACK





INFORMAZIONI GENERALI - GENERAL INFORMATION














- Prodotto in porcellanato smaltato con impasti colorati. Superfici naturali e lux. Bordi rettificati.
Coloured body glazed porcelain tiles and rectified edges. Natural and lux surfaces. Rectified edges.
- Tutte le misure sono nominali. Le conversioni in pollici sono approssimate ed arrotondate.
All sizes are nominal. The conversions into inches are approximate and rounded off.
- Le confezioni contengono il prodotto con diverse sfumature di tono, venature e strutture con direzionalità.
Al fine di ottenere il migliore effetto estetico, si consiglia, durante la posa, di prelevare le piastrelle alternativamente da scatole diverse e di posarle in senso ortogonale l'una all'altra.
The boxes contain the item with different shade variegations, veins and structures with direction. When you lay down the tiles, in order to obtain the best blend of the colours, we advice you to take the tiles alternatively from different boxes and lay down orthogonally one to the other.
- Per i formati rettangolari consigliamo una posa sfalsata massimo di 1/4 della lunghezza.
For the rectangular sizes we suggest an installation pattern at a maximum of 1/4 of the entire length.
- Bordi rettificati: nella posa mono e multi-formato è consigliato prevedere fughe di almeno 2 mm.
Rectified edges: when you lay down single and multi sizes it is suggested to use grouts of at least 2 mm.
- Ci riserviamo la facoltà di modificare e/o eliminare i formati, i calibri, gli spessori e le grafiche in qualsiasi momento senza che si renda necessaria una espressa comunicazione scritta.
We reserve the right to modify and/or remove the sizes, the calibers, the thickness and the graphics anytime, with no obligation of a further notice in writing.
- I toni degli articoli campionati sono puramente indicativi pertanto le variazioni di tono e di superficie non possono costituire motivo di contestazioni.
The shades of the samples are purely representative of the item itself so the shades variation and the surfaces variations cannot constitute the reason for a claim.
- Discromie, decentrature ed imprecisioni grafiche sono caratteristiche peculiari della serie Twenty ispirata alle lavorazioni artigianali e non possono costituire motivo di contestazioni.
Dyschromia, decentralisation and graphic imperfections are peculiar characteristics of the Twenty serie, which is inspired by craftsmanship and cannot be considered a reason for any claim.

SIMBOLOGIA - SYMBOLOGY

RET: rettificato - rectified

VARIAZIONE CROMATICA - SHADE VARIATION

V1	V2	V3	V4
 Aspetto uniforme Uniform appearance	 Lieve variazione Slight variation	 Moderata variazione Moderate variation	 Forte variazione Substantial variation

	Spessore	Variazione cromatica	Formatura del prodotto	Assorbimento d'acqua	Carico di rottura	Durezza della superficie	Resistenza agli sbalzi termici	Resistenza al cavillo	Conducibilità Termica	Cessione Piombo Cadmio	Resistenza chimica	PEI Resistenza all'abrasione superficiale	Resistenza al gelo	Coefficiente dinamico di frizione	Resistenza allo scivolamento
	Thickness	Shade variation	Product Moulding	Water absorption	Modulus of rupture	Hardness of the surface	Resistance to thermal shock	Crazing resistance	Electrical Conductivity	Emission Lead Cadmium	Chemical resistance	Resistance to surface abrasion	Frost resistance	Dynamic coefficient of friction	Slip resistance
				ISO 10545-3	ISO 10545-4	E.N. 101 MOHS	ISO 10545-9	ISO 10545-11	UNI E.N. 1745	ISO 10545-15	ISO 10545-13	ISO 10545-7	ISO 10545-12	DCOF	DIN 51130 DIN 51097
									CT	Pb / Cd					
Twenty CLAY WHITE PLAIN WHITE	10 mm	V1	RET	< 0,5 % Bla	≥ 43 N/mm ²	-	Garantita Guaranteed	Garantita Guaranteed	0,675 < CT < 0,715 W/mk	Pb < 0,1 Cd < 0,01	GA (V) GLA (V) GHA (V)	5	Garantita Guaranteed	> 0,42	R10 A+B
Twenty COLORS - NIGHT&DAY BLUES - FREEDOM STARDUST - MOONLIGHT FLAKES (IVORY - GREY - WHITE)	10 mm	-	RET	< 0,5 % Bla	≥ 43 N/mm ²	-	Garantita Guaranteed	Garantita Guaranteed	0,675 < CT < 0,715 W/mk	Pb < 0,1 Cd < 0,01	GA (V) GLA (V) GHA (V)	4	Garantita Guaranteed	> 0,42	R10 A+B
Twenty PLAIN BLUE	10 mm	V1	RET	< 0,5 % Bla	≥ 43 N/mm ²	-	Garantita Guaranteed	Garantita Guaranteed	0,675 < CT < 0,715 W/mk	Pb < 0,1 Cd < 0,01	GA (V) GLA (V) GHA (V)	3	Garantita Guaranteed	> 0,42	R10 A+B



EDIMAX
— CERAMICHE
ASTOR

Gruppo Beta S.p.A. 41014 Solignano (MO) Italy - Statale 569 n°234 tel. +39 059 748911 - fax +39 059 748990
www.edimaxastor.it - info@edimaxastor.it