

# STOCKHOLM



CERAMICHE  
SUPERGRES

# STOCKHOLM



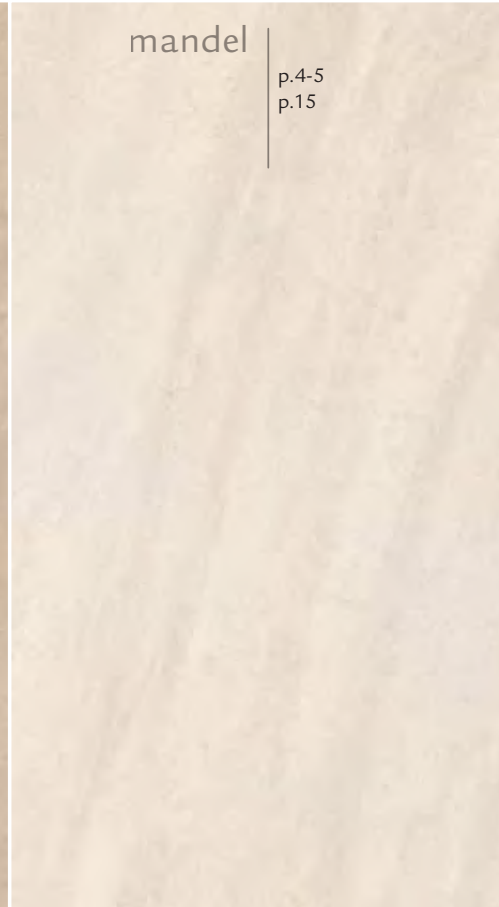
valnot

p.2-3  
p.14



mandel

p.4-5  
p.15



lysgrau

p.6-7  
p.8-9  
p.16



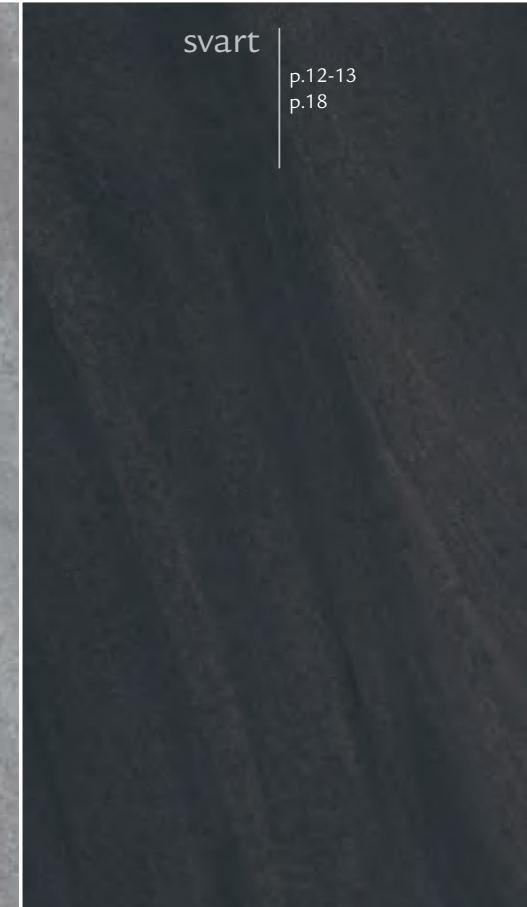
grau

p.8-9  
p.10-11  
p.17



svart

p.12-13  
p.18





Valnot 60x60 - 24"x24"

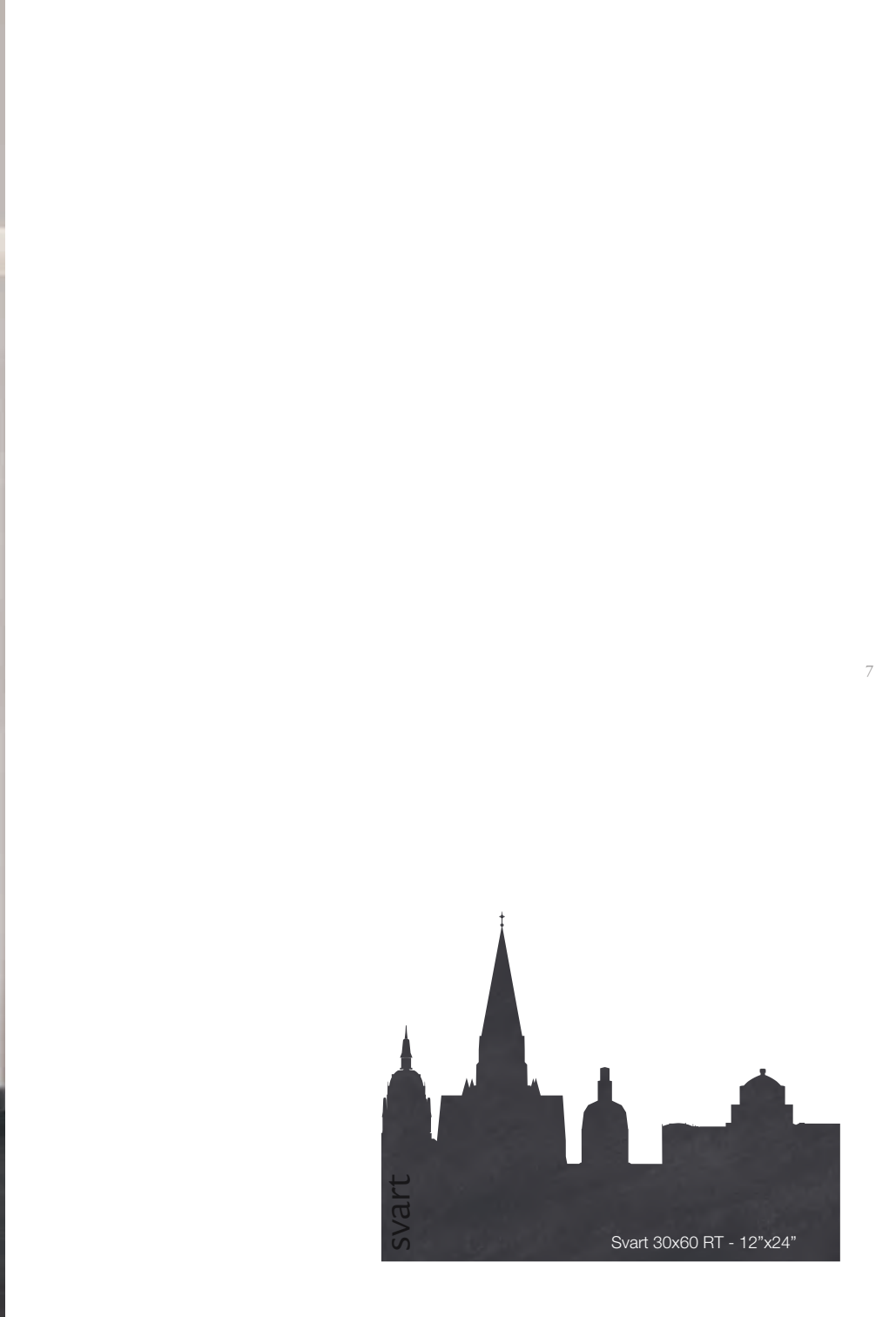
4



5



Grau 60x60 RT - 24"x24"



# STOCKHOLM

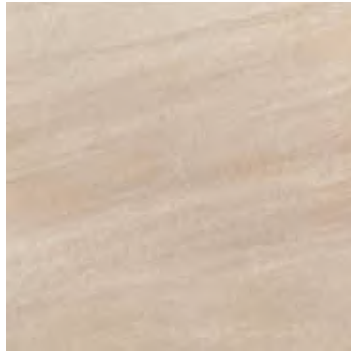
**60x60 RT . 30x60 RT . 9mm** 

GRES PORCELLANATO . Grès cérame . Feinsteinzeug  
Porcelain stoneware . Gres porcelánico . Керамогранит

EN 14411 Allegato G\_Piastrelle di ceramica pressate a secco con basso assorbimento d'acqua (E ≤ 0,5%)  
Grupo B la UGL (non smaltate, non émaille, unglasierte, unglazed, no esmaltado, Неглазурованные)

Disponibile anche Mandel T\_20 - 60x60 RT - 24"x24" - Spessore 20mm.  
Also available Mandel T\_20 - 60x60 RT - 24"x24" - Thickness 20mm.

**T\_20** 



Valnot 60x60 RT - 24"x24"



Valnot Mosaico 30x30 - 12"x12"  
Formato Tessera 5x5  
Mosaic Size 2,5"x2,5"



Valnot 30x60 RT - 12"x24"

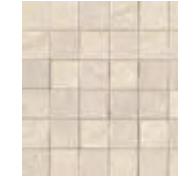
**Pezzi speciali** . Pièces spéciales . Formteile . Special tiles  
Piezas especiales . Специальные элементы



Valnot battiscopa  
9,5x60 - 3,74"x24"



Mandel 60x60 RT - 24"x24"



Mandel Mosaico 30x30 - 12"x12"  
Formato Tessera 5x5  
Mosaic Size 2,5"x2,5"



Mandel 30x60 RT - 12"x24"

**Pezzi speciali** . Pièces spéciales . Formteile . Special tiles  
Piezas especiales . Специальные элементы



Mandel battiscopa  
9,5x60 - 3,74"x24"

# STOCKHOLM

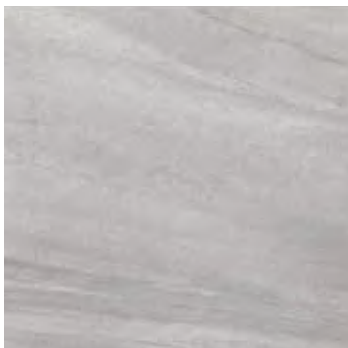
**60x60 RT . 30x60 RT . 9mm** 

GRES PORCELLANATO . Grès cérame . Feinsteinzeug  
Porcelain stoneware . Gres porcelánico . Керамогранит

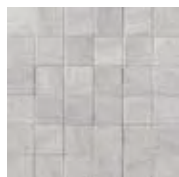
EN 14411 Allegato G\_Piastrelle di ceramica pressate a secco con basso assorbimento d'acqua (E ≤ 0,5%)  
Gruppo B la UGL (non smaltate, non émaille, unglasierte, unglazed, no esmaltado, Неглазурованные)

Disponibile anche Grau T\_20 - 60x60 RT - 24"x24" - Spessore 20mm.  
Also available Grau T\_20 - 60x60 RT - 24"x24" - Thickness 20mm.

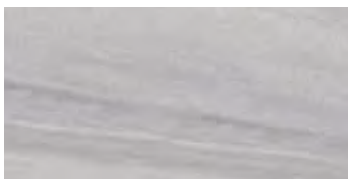
**T\_20** 



10  
Lysgrau 60x60 RT - 24"x24"



Lysgrau Mosaico 30x30 - 12"x12"  
Formato Tessera 5x5  
Mosaic Size 2,5"x2,5"

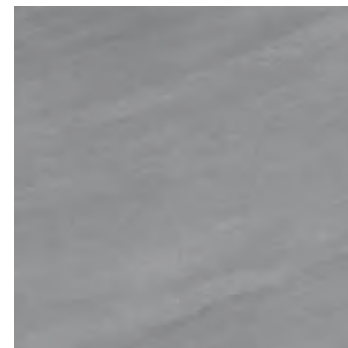


Lysgrau 30x60 RT - 12"x24"

**Pezzi speciali** . Pièces spéciales . Formteile . Special tiles  
Piezas especiales . Специальные элементы



Lysgrau battiscopa  
9,5x60 - 3,74"x24"



Grau 60x60 RT - 24"x24"



Grau Mosaico 30x30 - 12"x12"  
Formato Tessera 5x5  
Mosaic Size 2,5"x2,5"



Grau 30x60 RT - 12"x24"

**Pezzi speciali** . Pièces spéciales . Formteile . Special tiles  
Piezas especiales . Специальные элементы



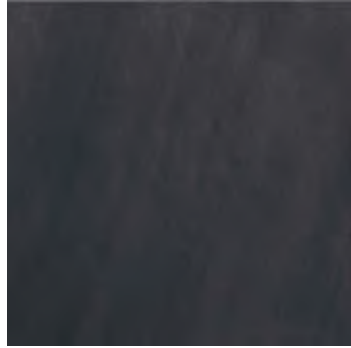
Grau battiscopa  
9,5x60 - 3,74"x24"

# STOCKHOLM

**60x60 RT . 30x60 RT . 9mm** 

GRES PORCELLANATO . Grès cérame . Feinsteinzeug  
Porcelain stoneware . Gres porcelánico . Керамогранит

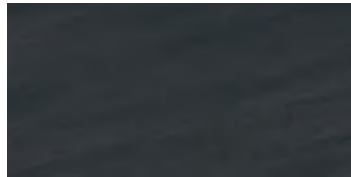
EN 14411 Allegato G\_Piastrelle di ceramica pressate a secco con basso assorbimento d'acqua (E ≤ 0,5%)  
Gruppo B la UGL (non smaltate, non émaille, unglasierte, no esmaltado, Неглазурованные)



Svart 60x60 RT - 24"x24"



Svart Mosaico 30x30 - 12"x12"  
Formato Tessera 5x5  
Mosaic Size 2,5"x2,5"



Svart 30x60 RT - 12"x24"

**Pezzi speciali** . Pièces spéciales . Formteile . Special tiles  
Piezas especiales . Специальные элементы



Svart battiscopa  
9,5x60 - 3,74"x24"

# STOCKHOLM

**60x60 RT . 30x60 RT . 9mm** 

GRES PORCELLANATO . Grès cérame . Feinsteinzeug  
Porcelain stoneware . Gres porcelánico . Керамогранит

	pz/box	m <sup>2</sup> /box	kg/box	box/plt	m <sup>2</sup> /plt	kg/plt	spessore
60x60 RT	3	1,08	21,75	40	43,20	882	9 mm
30x60 RT	7	1,26	25,00	40	50,40	1012	9 mm
Mosaico su rete 30x30	10	0,90	16,00	30	27,00	495	9 mm
Battiscopa 9,5x60	8	4,80 ml	9,50	84	403,20 ml	810	-
60x60 RT	2	0,72	32,00	30	21,60	972	20 mm



**Per dettagli sul prodotto in 20 mm di spessore e sui relativi sistemi di posa ed, in particolare, per le raccomandazioni, accorgimenti, limitazioni di utilizzo e precauzioni in fase di posa, si raccomanda di prendere visione dell'ultima versione del catalogo T20 e del sito [www.supergres.com](http://www.supergres.com)**

Pour de plus amples détails sur les produits de 20 mm d'épaisseur et sur leurs systèmes de pose, et en particulier, pour les recommandations, mises à jour, limitations d'usage et précautions en phase de pose, veuillez prendre connaissance du catalogue T20 et du site [www.supergres.com](http://www.supergres.com)

Für Details zum Produkt mit 20 mm Stärke und entsprechende Verlegesysteme, insbesondere hinsichtlich Hinweise und Anmerkungen, Nutzungseinschränkungen und Vorsichtsmassnahmen während der Verlegung, wird die Einsicht des Katalogs T20 und der Webseite [www.supergres.com](http://www.supergres.com) empfohlen.

For further details on the 20 mm product and the installation systems, in particular for recommendations , restrictions of use, and precautions during installation, please refer to [www.supergres.com](http://www.supergres.com) and to the catalogue T20.

Para mayores informaciones sobre el producto de 20 mm de espesor y sobre los relativos sistemas de colocación y, en especial, para las recomendaciones, precauciones y límites de empleo en fase de colocación, se recomienda consultar el catálogoT20 y el sitio [www.supergres.com](http://www.supergres.com)

Подробнее о плитках толщиной 20 мм, о системах монтажа, об ограничениях в применении, о мерах предосторожности при укладке можно узнать в каталоге [catalogoT20](http://catalogoT20) и на сайте [www.supergres.com](http://www.supergres.com)



GRES PORCELLANATO . Grès cérame . Feinsteinzeug  
Porcelain stoneware . Gres porcelánico . Керамогранит

Norma di riferimento: EN 14411 (ISO 13006) Allegato G - Piastrelle di ceramica pressate a secco con basso assorbimento d'acqua (Ev ≤ 0,5%)  
Norme referue: EN 14411 (ISO 13006) Annexe G - Carreaux céramiques pressés à sec avec faible absorption d'eau (Ev ≤ 0,5%)  
Besugznorm: EN 14411 (ISO 13006) Anlage G - Trockengepresste keramische Fliesen und Platten mit niedriger Wasseraufnahme (Ev ≤ 0,5%)  
Reference standard: EN 14411 (ISO 13006) Appendix G - Dry pressed ceramic tiles with low water absorption (Ev ≤ 0,5%)  
Norma de referencia: EN 14411 (ISO 13006) Anexo G - Baldosas de cerámica prensadas en seco (Ev ≤ 0,5%)  
Соответствует норме EN 14411 (ISO 13006) Керамические плитки, спрессованные всухую, с низким водопоглощением (Ev ≤ 0,5 %)



## GRUPPO B la UGL

CARATTERISTICHE TECNICHE Caracteristiques Techniques Technische Daten Technical Specifications Características Técnicas Технические характеристики	NORME Normes Normen Norms Normas Стандарт	REQUISITI RICHIESTI Conditions requisés Geforderte Eigenschaften Requirements Requisitos solicitados Требования	VALORI Valeur - Wert - Value - Valor - Показатели
			SUPERFICIE NATURALE
<b>Determinazione della resistenza all'abrasione profonda</b> (porcellanato non smaltato) UGL Résistance à l'abrasion profonde (grès cérame) UGL Tiefenverschleissbeständigkeit (unglasierte Feinsteinzeug) UGL Deep Scratch Resistance (unglazed porcelain) UGL Resistencia a la abrasión profunda (no esmaltados) UGL Стойкость к абразиву - (Неглазурованный керамогранит) UGL	ISO 10545-6	≤ 175 mm <sup>3</sup>	<b>Conforme</b> Conforme Gemäss According to Conforme Соответствует
<b>Determinazione della resistenza chimica</b> Résistance chimique Chemikalienbeständigkeit Chemical resistance Resistencia a los productos químicos Химическая стойкость	ISO 10545-13	<b>Classe UB minimo (UGL)</b> Categorie UB min (UGL) Klasse B min (UGL) Class B min (UGL) Clase B min (UGL) Минимум класс UB (UGL)	<b>Conforme</b> Conforme Gemäss According to Conforme Соответствует
<b>Determinazione della resistenza alle macchie</b> Résistance aux taches Beständigkeit gegen Fleckenbil Stain resistance Resistencia a las manchas Устойчивость эмали к загрязнению	ISO 10545-14	<b>Classe 3 minimo</b> Categorie 3 min Klasse 3 min Class 3 min Clase 3 min Минимум 3 класс	<b>Conforme</b> Conforme Gemäss According to Conforme Соответствует
<b>Resistenza allo scivolamento</b> Résistance au glissement Bestimmung der Rutschemmungsfähigkeit Slip resistance Antideslizamiento Сопротивление скольжению	DIN 51130	<b>Classificazione R</b> Classification R Klassifizierung R Classification R Evaluación R Классификация R	<b>R9</b>
<b>Resistenza allo scivolamento - superfici bagnate calpestio a piedi scalzi</b> Résistance au glissement - surfaces mouillées passage à pieds nus Bestimmung der Rutschemmungsfähigkeit - nasse Oberfläche - Barfuß-gehen Coefficient of friction - dry surfaces walking on barefoot Resistencia al deslizamiento - superficie mojada pasaje con pies descalzos Сопротивление скольжению. Влажные полы, по которым ходят босыми ногами	DIN 51097	<b>Classificazione A B C</b> Classification A B C Klassifizierung A B C Classification A B C Evaluación A B C Классификация A B C	<b>A</b>
<b>Resistenza allo scivolamento - coefficiente di attrito dinamico (DCOF)</b> Résistance au glissement - résistance de frottement dynamique Bestimmung der Rutschemmungsfähigkeit - dynamischer reibungskoeffizient Slip resistance - dynamic friction coefficient Resistencia al deslizamiento - coeficiente de rozamiento dinamico Сопротивление скольжению. Коэффициент трения	BOT 3000 STANDARD ANSI A137.1:2012	≥ 0,42 wet	<b>Conforme</b> Conforme Gemäss According to Conforme Соответствует
		Consultare il sito: <a href="http://www.supergres.com/upec">www.supergres.com/upec</a> Pour plus d' informations consulter: <a href="http://www.supergres.com/upec">www.supergres.com/upec</a>	

I dati e le informazioni riportate nel presente catalogo sono aggiornate al momento della stampa e potrebbero subire successive correzioni e/o modifiche. Verificare sempre l'ultima edizione disponibile confrontando la data riportata nell'ultima pagina della versione cartacea, con quella indicata nel pdf del catalogo scaricabile dal sito [www.supergres.com](http://www.supergres.com)

I colori e le caratteristiche estetiche dei prodotti sono indicativi e si avvicinano quanto più possibile a quelli reali nei limiti consentiti dai processi di stampa.

Data and information reported in this catalogue are updated at the moment of catalogue printing therefore they may be subject to subsequent corrections and/or amendments. Always check the latest available issue and compare the date reported on the last page of the hard-paper copy of the catalogue with that stated in the pdf. format downloadable on website [www.supergres.com](http://www.supergres.com)

The colours and aesthetic features of products are indicative and reproduce, as close as possible, the real colours and features taking into consideration the restrictions of printing processes.

CERAMICHE  
**SUPERGRES**

Finito di stampare nel mese di Febbraio 2019 per conto di Ceramiche Supergres - Strada Statale 467, n° 34 - 42013 Casalgrande (RE) Italy  
I prodotti, i marchi e le immagini riprodotte nel presente catalogo sono tutelati ai sensi della normativa vigente in materia di proprietà intellettuale. Ogni violazione degli stessi verrà perseguita a norma di legge.

Printed in the month of February 2019 on behalf of Ceramiche Supergres - Strada Statale 467, n° 34 - 42013 Casalgrande (RE) Italy  
All products, trade-marks and photographs reproduced in this catalogue are subject to all existing intellectual property laws. Any breach thereof will be dealt with under the provisions provided by such law.

CERAMICHE  
**SUPERGRES**

Office: Strada Statale 467, 34 - 42013 Casalgrande (RE) Italy . Ph. +39 0522 997411 . Fax Export +39 0522 997415 - Fax Italia +39 0522 997494  
Warehouse: Via dell'Industria, 1 - Villaggio Macina - 42013 Salvaterra di Casalgrande (RE) Italy . info@supergres.com . www.supergres.com