

SILKYSTONE

Porcelain
Rectified

Gres porcellanato
Rettificato

Feinsteinzeug
Kalibriert

Grès cérame
Rectifié

Керамогранит
Ректифицированная



Nat	5	R10	A+B	ASTM	DCOF	PTV	36***	10mm	EN 14411 APPENDICE G Bla GL
Rigato	5	R11	A+B-C	ASTM	DCOF			10mm	EN 14411 APPENDICE G Bla GL
As	5	R11	A+B-C	ASTM	DCOF	PTV	36***	10mm	EN 14411 APPENDICE G Bla GL

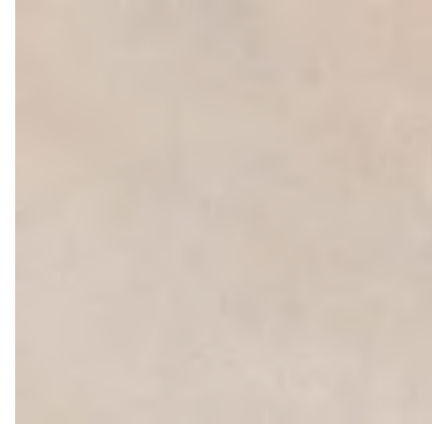
Colours

Colori • Farben • Couleurs • Цветов

Light



Sand



Greige



Taupe



Surfaces

Superfici • Oberflächen • Surfaces • Поверхности

Nat Natural



Rigato Grooved



As Antislip



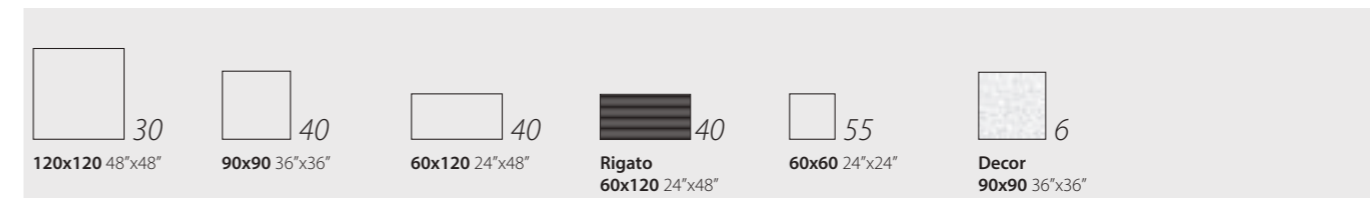
Pendulum Friction Test - BS 7976

Metodo del Pendolo

- * **Determination of slip resistance of pedestrian surfaces; it does not coversports surfaces and road surfaces for vehicles (skid resistance).**
Determinazione della resistenza allo scivolamento delle superfici pedonabile; non si applica alle pavimentazioni sportive ed alle pavimentazioni stradali veicolabili.
- ** **Anti-slip performance is guaranteed at the time of delivery of the product.**
Le presetazioni Anti-slip vengono garantite al momento della consegna del prodotto.
- *** **Pendulum Friction Test - AS 4586 / UNE-ENV 12633 on demand / su richiesta.**

Number of patterns

Numero di grafiche • Grafische Nummer • Nombre d'images • Количество графических оформлений



Sizes

Formati • Formate • Format • Форматы

	10mm					
	120x120 48"x48"	90x90 36"x36"	60x120 24"x48"	Rigato 60x120 24"x48"	60x60 24"x24"	
Surface	NAT	NAT	AS	NAT	NAT	NAT
Light	Silkstone Light 120120 CSASKSLI12	Silkstone Light 9090 CSASKSLI90	Silkstone Light 9090 As CSASKSLA90	Silkstone Light 60120 CSASKLI612	Silkstone Rigato Light 60120 CSASKSRL60	Silkstone Light 6060 CSASKSLI60
Sand	Silkstone Sand 120120 CSASKSA12	Silkstone Sand 9090 CSASKSA90	Silkstone Sand 9090 As CSASKSA90	Silkstone Sand 60120 CSASKSA612	Silkstone Rigato Sand 60120 CSASKRS60	Silkstone Sand 6060 CSASKSA60
Greige	Silkstone Greige 120120 CSASKSGR12	Silkstone Greige 9090 CSASKSGR90	Silkstone Greige 9090 As CSASKSGA90	Silkstone Greige 60120 CSASKGR612	Silkstone Rigato Greige 60120 CSASKSRG60	Silkstone Greige 6060 CSASKSGR60
Taupe	Silkstone Taupe 120120 CSASKSTA12	Silkstone Taupe 9090 CSASKSTA90	Silkstone Taupe 9090 As CSASKSTA90	Silkstone Taupe 60120 CSASKTA612	Silkstone Rigato Taupe 60120 CSASKSRT60	Silkstone Taupe 6060 CSASKSTA60
Pz / Box	2	2		2	2	4
Mq / Box	2,88	1,62		1,44	1,44	1,44
Kg / Box	63,4	35,6		31,7	31,7	31,7
Kg / Mq	22	22		22	22	22
Boxes / Pallet	16	20		24	24	30
Mq / Pallet	46,08	32,4		34,56	34,56	43,2
Kg / Pallet	1.014	712		761	761	951

Decors&Accessories

10mm	
Decor 90x90 36"x36"	Mosaico 30x30 12"x12"
NAT	NAT
Silkstone Decor Light 9090 CSASKSDL90	Mosaico Silkstone Light CSAMSLLI30
Silkstone Decor Greige 9090 CSASKSDG90	Mosaico Silkstone Greige CSAMSLGR30
	Mosaico Silkstone Taupe CSAMSLTA30
2	6
1,62	0,54
35,6	11,3
22	20,19
20	60
32,4	32,14
712	678

Certifications

Certificazioni • Zertifizierungen • Certifications • Сертификаты



** Static coefficient of friction
ASTM test
ASTM C1028 - 06
Dry $\mu > 0,6$ Wet $\mu > 0,6$
Natural Surface - Antislip

Dynamic coefficient of friction
DCOF AcuTest®
ANSI A137.1 - 2012
WET $\geq 0,42$
Natural Surface - Antislip

Suggestion for laying

Consigli per la posa • Ratschläge für die Verlegung • Conseil pour la pose • Советы по укладке

Considering the characteristics of this series we suggest:
• 2-3 mm joint
• For the sizes 60x120 lined up laying or 4/5 staggered laying is suggested

Viste le caratteristiche della serie si consiglia:
• Fuga 2-3 mm
• Per i formati 60x120 si consigliano pose affiancate o a correre sfalsate di 4/5

Im Hinblick auf die Eigenschaften der Serie es empfiehlt sich:
• 2-3 mm Fuge
• Für Formate 60x120 neben verlegt oder 4/5 versetzt

Vu les caractéristiques de la série, nous conseillons:
• Joint 2-3 mm
• Pour les formats 60x120, il est conseillé une pose alignée ou une pose décalée au 4/5

В силу характеристик данной серии рекомендуется:
• Шов 2-3 мм
• Для форматов 60x120 рекомендуется укладка рядами или со смещением на 4/5



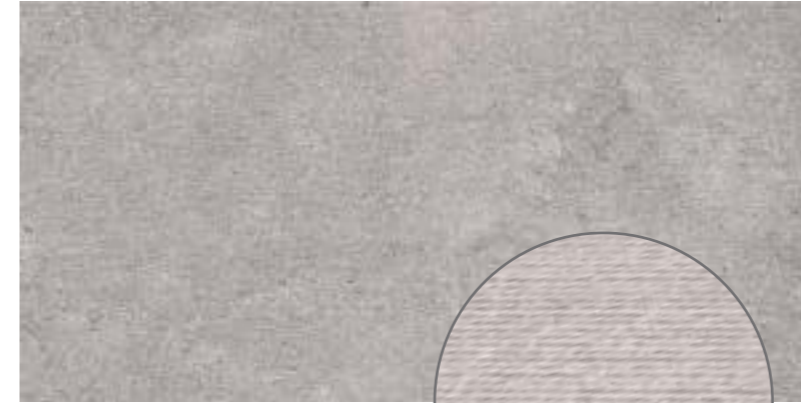
90x90 36"x36"
Silkstone Decor Light 9090
CSASKSDL90



90x90 36"x36"
Silkstone Decor Greige 9090
CSASKSDG90

Special Trims • Pezzi Speciali • Formteile • Pièces spéciales • Специальные Изделия

	⊗ 10mm				
	 Battiscopa 90 7,3x90 27/8"x36"	 Battiscopa 60 7,3x60 27/8"x24"	 Gradone 120** 33x120 13"x48"	 Ang. Gradone 120 Sx** 33x120 13"x48"	 Ang. Gradone 120 Dx** 33x120 13"x48"
Surface	NAT	NAT	NAT	NAT	NAT
Light	Battiscopa 90 Silkstone Light CSABTSLI90	Battiscopa 60 Silkstone Light CSABTSLI60	Gradone 120 Silkstone Light CSAGSKLI12	Ang. Gradone 120 Sx Silkstone Light CSAGASLS12	Ang. Gradone 120 Dx Silkstone Light CSAGASLD12
Sand	Battiscopa 90 Silkstone Sand CSABTSSA90	Battiscopa 60 Silkstone Sand CSABTSSA60	Gradone 120 Silkstone Sand CSAGSKSA12	Ang. Gradone 120 Sx Silkstone Sand CSAGASAS12	Ang. Gradone 120 Dx Silkstone Sand CSAGASAD12
Greige	Battiscopa 90 Silkstone Greige CSABTSGR90	Battiscopa 60 Silkstone Greige CSABTSGR60	Gradone 120 Silkstone Greige CSAGSKGR12	Ang. Gradone 120 Sx Silkstone Greige CSAGASES12	Ang. Gradone 120 Dx Silkstone Greige CSAGASGD12
Taupe	Battiscopa 90 Silkstone Taupe CSABTSTA90	Battiscopa 60 Silkstone Taupe CSABTSTA60	Gradone 120 Silkstone Taupe CSAGSKTA12	Ang. Gradone 120 Sx Silkstone Taupe CSAGASUS12	Ang. Gradone 120 Dx Silkstone Taupe CSAGASUD12
Pz / Box	8	14	2	1	1
Mq / Box					
Kg / Box					
Kg / Mq					
Boxes / Pallet					
Mq / Pallet					
Kg / Pallet					

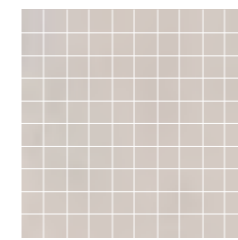


Silkstone Greige Rigato 60x120 24"x48"

Available in all colours



Details



Mosaico* 30x30 12"x12"

Available in all colours



* On net
Montato su rete
Auf Netz
Sur trame
Собрана на сетке



Silkstone Sand Rigato 60120