

granigliati linea tecnica

7

COLORI/
COLOURS
COULEURS
FARBE
COLORES

2

FORMATI/
SIZES
FORMATS
FORMATE
FORMATOS

2

SUPERFICI/
FINISHES
FINITIONS
OBERFLÄCHEN
ACABADOS

2

SPESSORI/
THICKNESS
ÉPAISSEUR
STÄRKE
ESPESOR

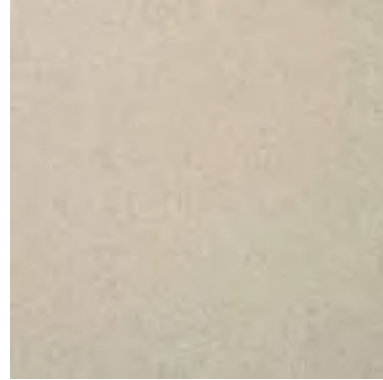


granigliati

AURORA **v0**



CALEDONIA **v0**



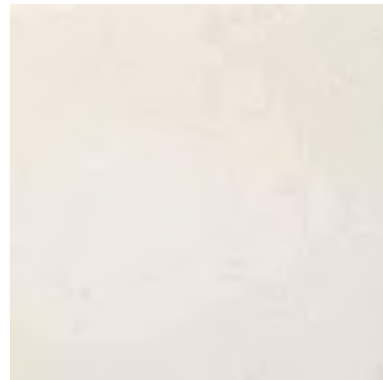
PORFIDO **v0**



PIETRA SERENA **v0**



DIASPRO **v0**



BARDIGLIO **v0**



CARPARO **v0**



linea tecnica

AURORA **v0**



PIETRA SERENA **v0**



BARDIGLIO **v0**



CARPARO **v0**



2

FORMATI/

SIZES / FORMATS / FORMATE / FORMATOS



- + 30x30 (12"x12") Not RT 8,6 mm
- 30x30 (12"x12") Not RT 14 mm

8

PEZZI SPECIALI/

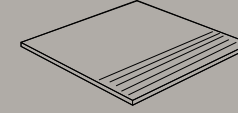
TRIMS / PIECES SPECIALES / FORMTEILE /
PIEZAS ESPECIALES



BATTISCOPA

BULLNOSE / PLINTHE /
SOCKEL / RODAPIÉ

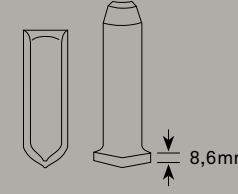
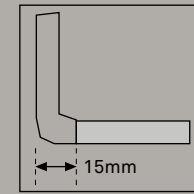
- 10x30 (4"x12") Not RT 8,6 mm



GRADINO

STEP TREAD / NEZ DE MARCHE
STUFENPLATTE / PELDAÑO

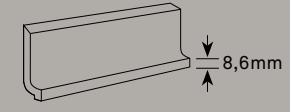
- 30x30 (12"x12") Not RT 8,6 mm



ANGOLI RACCORDO INT./EST.

CORNER INT./EXT / ANGLE INT./EST.
INN/AUSS ECKE / ÁNGULOS INT./EXT.

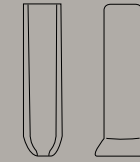
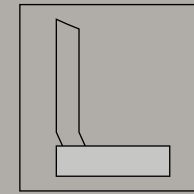
- 10x3 (4"x1³/₁₆") Not RT 8,6 mm



RACCORDO A PAVIMENTO

COVE BASE / PLINTHE À GORGE
HOHLKEHLSOCKEL / UNIÓN DE PISO

- 10x30 (4"x12") Not RT 8,6 mm



ANGOLI SGUSCIA INT./EST.

CORNER INT./EXT / ANGLE INT./EST.
INN/AUSS ECKE / ÁNGULOS INT./EXT.

- 10x3 (4"x1³/₁₆") Not RT 8,6 mm



BATTISCOPA CON SGUSCIA

COVE BASE / PLINTHE À TALON
AUFSETZSOCKEL / ESCOCIA

- 10x30 (4"x12") Not RT 8,6 mm

FORMATI

FORMATS / FORMATS / FORMATE / FORMATOS

| | 30x30 12"x12" | 30x30 12"x12" |
|---------------|------------------|------------------|
| | Not RT | Not RT |
| | 8,6 mm | 14,0 mm |
| AURORA | ●+ | |
| BARDIGLIO | ●+ | |
| CALEDONIA | ● | |
| PORFIDO | ● | |
| CARPARO | ●+ | |
| DIASPRO | ● | ● |
| PIETRA SERENA | ●+ | |

● Natural R9 | + R12

● Natural R9 | + R12